

British Tenpin Bowling Association 50th National Championships

Saturday 19th / Sunday 20th March 2011

Saturday 26th / Sunday 27th March 2011



Collier Row Road, Collier Row
Romford, Essex RM5 2BH



ROLLERBOWL



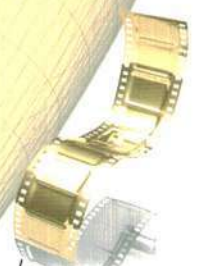
THE SCORING SYSTEM REVOLUTION



Complete Bowling Management



Integrated Bowler Archive



Large Animation Variety



Advanced Reservation System



Easy Tournament System



Reports and Statistics

With a complete range of exciting new equipment and facilities, Switch brings more entertainment, quality and performance to bowling.



Switch for success
www.switchbowling.com
Distributed by:
Switch Bowling UK Ltd.
Tel. +44 (1455) 851777
terryfawdington@switchbowling.co.uk

THE WARMEST OF WELCOMES TO THIS MILESTONE 50th CHAMPIONSHIPS



I have had the honour and pleasure to be involved with the BTBA for the past 20+ years and have always been amazed at the commitment of the BTBA officers working so hard for you, the bowlers, to make our sport what it is today.

The BTBA is a credit to our chosen sport, a major contributor to the world scene of tenpin bowling and, the defender of the bowlers needs and rights to enjoy our sport, giving the opportunity for credit and recognition bowlers deserve.

The National Association of Youth Bowling Clubs has nurtured young players and developed them to be world beaters.

Tournaments have been organised and rankings maintained for all those who want to participate at this level. Lanes are inspected annually to make sure that requirements are met to assist every player, at whatever level they aspire to.

I know that we all owe a HUGE thank you to the BTBA officers and staff, past and present for the last 50 years. To those who will take us through the next 50 years, I would say hold onto and build on the same values, qualities and commitments to further our sport for the good of all bowlers.

So, enjoy this 50th Tournament. Make it special, feel special, be special because the 50th Nationals is special.

I wish you all the best, enjoy the camaraderie and sport and, when you see those BTBA folks, make them feel special too and say a big 50th thank you.

Terry Fawdington
Managing Director Switch Bowling UK Limited
One Conery Lane, Enderby LE19 4AB 01162 848777

2011 NATIONAL CHAMPIONSHIPS

Squad Scheduling

Saturday 19th & 26th March 2011

09:00 Singles & Doubles
Lane Maintenance

12:30 Singles & Doubles
Lane Maintenance

16:15 **Team Event**

Sunday 20th & 27th March 2011

09:00 Singles & Doubles
Lane Maintenance

12:30 Singles & Doubles
Lane Maintenance

16:00 Singles & Doubles
Lane Maintenance

19:45 **Team Event**



**An exceptionally warm message of welcome
to the
50th BTBA NATIONAL CHAMPIONSHIPS
from**

Pat White
BTBA CHAIRMAN



It is particularly good to welcome everyone to the 50th National Championships and wish bowlers and supporters a great weekend.

Holding the 50th National Championships is an achievement of which I am very proud and I consider it an honour to be associated with such a prestigious event. So many people have played their part in making the Nationals a success over many years and it would take pages to list and thank all concerned but, everyone who has ever contributed to this tournament should know that their involvement has always been very much appreciated by the BTBA and the bowlers, as is the hospitality offered by the Centres. Without the co-operation of centre staff and the unrivalled commitment of the A Team, plus our valued participants, it is doubtful that we would be celebrating our 50th tournament and I am sure that the National Council would like to join me in offering grateful thanks to those who have supported us so far and, will hopefully continue to do so.

49TH NATIONAL CHAMPIONS

Lakeside Superbowl, Nuneaton, Warwickshire

CHAMPIONS

LADIES

Division A

Five Person Team

The Ladies 3092

Doubles

L.Ivory / S.Purnell 1299

Singles

Danielle Gates 704

All Events

Lisa John 1987

Division B

Five Person Team

Damsels In Distress 2539

Doubles

J.Lofty / C.Connick 1071

Singles

Katherine Allen 573

All Events

Laura Brockwell 1646

Division C

Five Person Team

The Bandits 2331

Doubles

K.Winter / S.Rousell 848

Singles

Linda Young 473

All Events

Linda Young 1433

Senior All Events

Angie Brown 1812

YAC All Events

Danielle Gates 1890

REGULAR

Division A

Five Person Team

Black Sheep 3209

Doubles

M.Hamilton / N.Whitaker 1402

Singles

Leon Devlin 697

All Events

Tom Turner 2026

Division B

Five Person Team

R.A.F Air Command 2817

Doubles

J.Kerr / D.Chapman 1245

Singles

Malcolm Faulkner 635

All Events

Malcolm Faulkner 1857

Division C

Five Person Team

Guernsey II 2445

Doubles

T.Savident / C.Dorey 1072

Singles

Grant Jennings 581

All Events

Paul Lewis 1623

Senior All Events

Gary Barlow 1967

YAC All Events

Tom Turner 2026

Welcome
to all participants in the
50th BTBA National Championships
from
Bernie White
Tournament Manager



In these difficult times it is very encouraging to welcome so many participants to this very special tournament. As the Nationals enjoys its 50th birthday, it is a real and genuine pleasure to see so many familiar faces who have entered for many of the 50 years and it is my very real hope that the newer entrants will wish to be part of future events.

Together with the members of the excellent A Team, I will do my very best to ensure that this really is a special tournament which will produce memories which we will all enjoy recalling.

My objective is to run a successful tournament which will also be a true celebration for all concerned.

The best of bowling is wished to all participants.

A TEAM



Andy James

Michele Godfrey

Dave Godfrey

Ross Gibson

Andrew Green

UK CHAMPIONSHIPS

Past Champions

| | | | |
|------|-----------------------|---------------|---------------------------------|
| 1991 | GX Superbowl | Fareham | Geoff Buck / Alison Teasdale |
| 1992 | GX Superbowl | Fareham | Neil Webb / Emma Barlow |
| 1993 | GX Superbowl | Fareham | Chuck Carroll / Pauline Smith |
| 1994 | Solar Bowl | Ipswich | Leslie Miranda / Gemma Burden |
| 1995 | Solar Bowl | Ipswich | Kevin Hills / Gemma Burden |
| 1996 | Solar Bowl | Ipswich | Richard Hood / Nikki Harvey |
| 1997 | AMF Bowl | Nottingham | Neil Le Manquais / Nikki Harvey |
| 1998 | Superbowl | Milton Keynes | Richard Hood / Pauline Buck |
| 1999 | Megabowl | Dunstable | Steve Thornton / Nikki Harvey |
| 2000 | Megabowl | Dunstable | Chris Snashall / Kirsten Penny |
| 2001 | Megabowl | Dunstable | Lol Ellis / Kirsten Penny |
| 2002 | Megabowl | Dunstable | Ricki Frolidi / Lisa Gardner |
| 2003 | Megabowl | Chelmsford | Paul Moor / Donna Adams |
| 2004 | Go Bowling | Fareham | Paul Moor / Lisa Gardner |
| 2005 | Bowling International | Coventry | Nick Froggatt / Donna Adams |
| 2006 | Number Ten | Rugby | Mike Quarry / Kirsten Penny |
| 2007 | Madison Heights | Maldon | Darren Cundy / Jenny Billingham |
| 2008 | Lakeside Superbowl | Nuneaton | Steve Thornton / Hayley Rumkee |
| 2009 | AMF Bowl | Purley | Ray Teece / Lisa John |
| 2010 | Lakeside Superbowl | Peterborough | Paul Moor / Laura Ivory |



Bernice Bass



Sally Munson



Adam Oughton



Roz Page

I would like to take this opportunity to not only congratulate the BTBA on reaching its 50th year, and wish Bernie White and the A Team every success with this prestigious event but, also introduce Head Office staff

Congratulations are certainly due to the many people, the majority of whom are volunteers, who worked tirelessly to enable the BTBA to reach this milestone, an achievement of which any Governing Body should be justly proud.

Bernice Bass
BTBA Head Office

UK CHAMPIONSHIPS

Past Champions

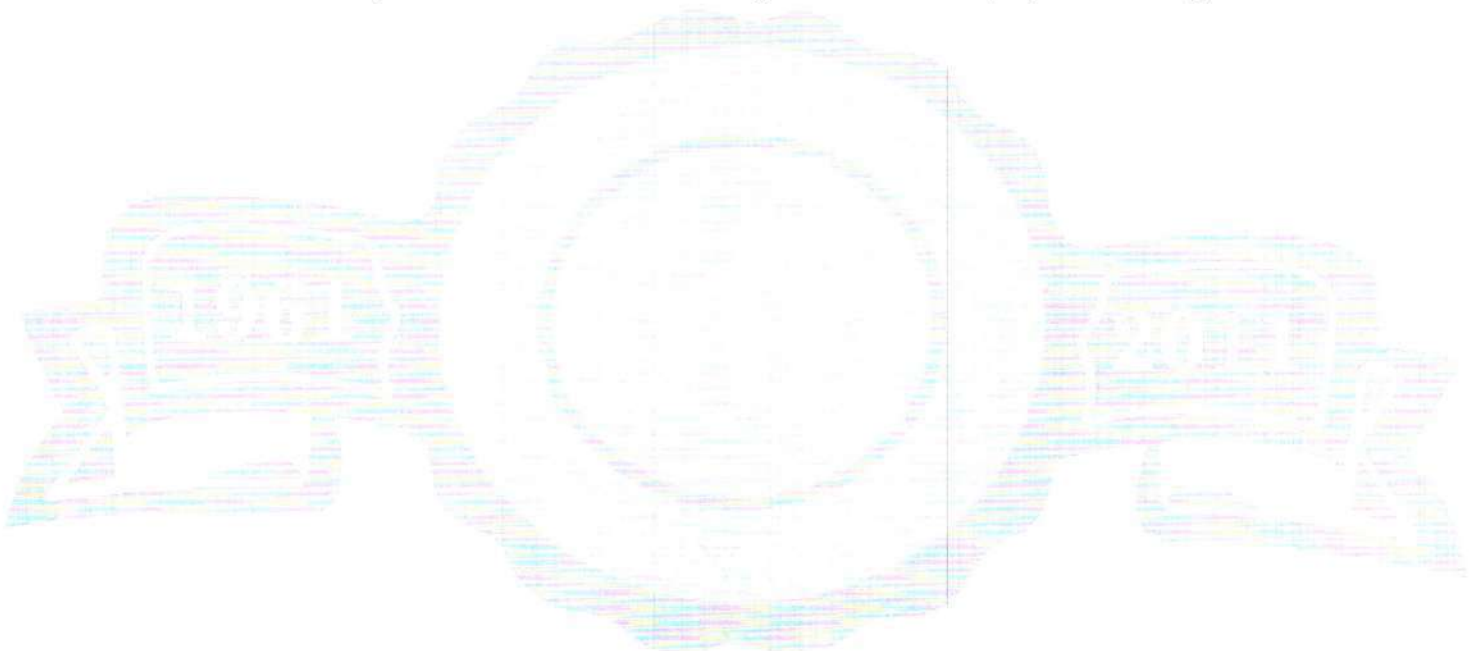
Division B

| | | | |
|------|--------------------|--------------|--|
| 2008 | Lakeside Superbowl | Nuneaton | Elliott Crosby / Michaela Knight |
| 2009 | AMF Bowl | Purley | Ben Howison-Johnstone / Verity Crawley |
| 2010 | Lakeside Superbowl | Peterborough | Allen Poulson / Laura Brockwell |

Past Champions

Division C

| | | | |
|------|--------------------|--------------|---------------------------------|
| 2008 | Lakeside Superbowl | Nuneaton | Stuart Harris / Babs Savident |
| 2009 | AMF Bowl | Purley | Andrew Thomson / Claire Connick |
| 2010 | Lakeside Superbowl | Peterborough | Jim Relph / Linda Young |



B.T.B.A. NATIONAL CHAMPIONSHIPS

Tournament Venues

| | | | |
|------|---|------|---|
| 1962 | ABC Tenpin Lanes, Stamford Hill, London | 1987 | Stevenage Bowl, Stevenage, Herts |
| 1963 | Airport Bowl, Harlington, Middlesex | 1988 | Sunderland Bowl, Sunderland, Tyne & Wear |
| 1964 | ABC Bowl, Wylde Green, Birmingham | 1989 | First Leisure Cardiff Bowl, Wales |
| 1965 | Top Rank Bowl, Old Trafford, Manchester | 1990 | GX Superbowl, Purshaw Street, Birmingham |
| 1966 | Wembley Stadium Bowl, Wembley, Middlesex | 1991 | Premier Bowl, Blackpool, Lancashire |
| 1967 | Ambassador Lanes, Hounslow, Middlesex | 1992 | Airport Bowl, Harlington, Middlesex |
| 1968 | Granada Belle Vue Lanes, Manchester | 1993 | Airport Bowl, Harlington, Middlesex |
| 1969 | Firth Park Bowl, Sheffield | 1994 | Number Ten, Norwich, Norfolk |
| 1970 | Crawley Bowl, Crawley, Sussex | 1995 | Northern Leisure Bowl, Rotherham, Yorkshire |
| 1971 | Ambassador Lanes, Worthing | 1996 | Superbowl, Swindon, Wiltshire |
| 1972 | Excel Bowl, Tolworth, Surrey | 1997 | AMF Bowl, Nottingham, Nottinghamshire |
| 1973 | ABC Bowl, North Harrow, Middlesex | 1998 | Sunderland Bowl, Sunderland, Tyne & Wear |
| 1974 | Ambassador Lanes, Hounslow, Middlesex | 1999 | First Leisure Plymouth Bowl, Devon |
| 1975 | Leeds Bowl, Merrion Centre, Leeds | 2000 | Lloyds Lanes, Enfield, Middlesex |
| 1976 | International Tenpin Club, Lewisham, London | 2001 | Megabowl, Chelmsford, Essex |
| 1977 | Wessex Bowl, Poole, Dorset | 2002 | Megabowl, Chester, Cheshire |
| 1978 | Airport Bowl, Harlington, Middlesex | 2003 | AMF Bowl, Nottingham, Nottinghamshire |
| 1979 | Airport Bowl, Harlington, Middlesex | 2004 | Airport Bowl, Harlington, Middlesex |
| 1980 | Airport Bowl, Harlington, Middlesex | 2005 | Megabowl, Coventry, Warwickshire |
| 1981 | Stevenage Bowl, Stevenage, Herts | 2006 | Number Ten, Norwich, Norfolk |
| 1982 | Airport Bowl, Harlington, Middlesex | 2007 | Hollywood Bowl, Bradford, Yorkshire |
| 1983 | Sunderland Bowl, Sunderland, Tyne & Wear | 2008 | Charrington Bowl, Tolworth, Surrey |
| 1984 | Sunderland Bowl, Sunderland, Tyne & Wear | 2009 | City Pavilion Lanes, Romford, Essex |
| 1985 | Stevenage Bowl, Stevenage, Herts | 2010 | Lakeside Superbowl, Nuneaton, Warwickshire |
| 1986 | Wessex Bowl, Poole, Dorset | 2011 | City Pavilion Lanes, Romford, Essex |

BTBA National Championships**at Stamford Hill, London****THE BEGINNING OF
THE BEGINNING**

TEETHING TROUBLES, criticisms and problems apart, the first national tournament of the British Tenpin Bowling Association, held at Tenpin Lanes, Stamford Hill, London, on Saturday and Sunday, May 5 and 6, held out the prospect of a regular annual event which will be the highlight of the British tenpin bowler's year.

When the speeches were done, when Hattie Jacques had selected "Joan Bowler" in the person of Lynn Hamilton and the latter had bowled the first ball, there was an electric atmosphere as the competitors lined up to begin the five-person team event which occupied the whole of the opening evening. Play was as keen as it was determined, and it soon became clear that the practised and expert side from USAF Sculthorpe were going to offer formidable competition to all comers. They proved invincible, despite the desperate effort of the London Tornados and the presence in other combinations of many of Britain's topweight performers.

On Sunday the singles and doubles produced many noteworthy efforts, and, as on the previous evening, big crowds gathered from both London and the provinces to watch the struggle. The spectators realised as much as did the players that more was at stake than in most competitive events yet held.

There were brickbats as well as bouquets—the decision to run the championships on a handicap basis, the method of handicapping and the adherence to American principles were among the former—but Morris and Rita Glazer and their BTBA colleagues relied on their enthusiasm to offset their lack of experience, and made a pretty good fist of it. The sterling work put in both before and during the tournament by Charles Fleming was in itself an inspiration to the rest.

Obviously, next year's tournament, proposed to be held in February or March, will benefit from the lessons of this year's. The 1964 series, with thousands more BTBA members a certainty long before then, will be better still. In the end, the tenpin bowling population of the United Kingdom will have cause to be eternally grateful to the pioneers for setting the ball rolling at a time when the organised game was a mere twelve months old.

It was acknowledged that the organisers owed much both to AMF and Brunswick. The former supplied the venue and put it into first-class condition, as well as encouraging many of Britain's most promising players to participate. Brunswick, with their novel King and Queen Bee sponsorship from the centres they had equipped, brought in many other enthusiastic competitors; besides, they set the scene the evening before with a pre-tournament dinner attended by a representative of the most active promoters of the sport.

Douglas Russell - Roberts, managing director of the newly renamed Brunswick Corporation (UK) Ltd., welcomed Ivor Smith and Terence Wright (Top Rank), Ivor Cooper (Bowladromes), Ian Liddell and William Paul (Blantyre), Wally Hall (Fairlanes) and Cmdr. Drake and Lt.-Cmdr. David Dowley (HMS *Ganges*). He told them that his company had been operating internationally for only two years, but was already established in 57 countries, with over 20,000 lanes in 2,000 centres.

This year, he observed, competitors were converging on the BTBA championships by the carload; next year



"Joan Bowler" (Lynn Hamilton), crowned and robed, starts the championships.

it would be by the trainload!

Ivor Smith, agreeing with him, said that this was just the beginning of a new era. "We are all still learning, and it is up to you, the players, to tell us what is wrong. We are learning to run just as you are learning to bowl."

In five years' time, he predicted, the development of the game would be quite fantastic. The sport would have become as international as football, it would be played in the schools, and the centres in which players would bowl would be totally unlike those they were using today.

The full results of the BTBA championships are on the facing page. A scratch event organised for the Monday evening attracted 84 entries (61 men, 23 women) and the following results:

Men—Lee Kates, 589 (£17); J. Rose, 581 (£8); Bill Campbell, 566 (£4); Jim Brewer, 545 (26s.); Paul Lane, 543 (25s.); D. Thomas, 528 (£1); Danny Lever, 525 (£1).

Women—Enid King, 565 (£8); R. Kent, 496 (£4); Mitzi Rose, 493 (13s.).



"Tenpin Monthly" was at Stamford Hill with a gay stand which attracted universal attention.

BTBA NATIONAL TOURNAMENT

All the Winners, the Scores and the Prizes

TEAM EVENT, REGULAR DIVISION

| Competitor | Area | Score | Prize* |
|-------------------------|------------|-------|--------|
| 1. Sculthorpe, USAF | Sculthorpe | 2,902 | (£60) |
| 2. Tornados | London | 2,892 | (£30) |
| 3. Moussec Aces | Manchester | 2,883 | (£16) |
| 4. The Ravens | London | 2,856 | (£12) |
| 5. Lamplighters | London | 2,834 | (£10) |
| 6. AMF No.2 | London | 2,806 | (£9) |
| 7. Excel Bowling | London | 2,799 | (£7) |
| 8. Direct of Smithfield | London | 2,790 | (£6) |
| 9. Wallabys | London | 2,786 | (£5) |

TEAM EVENT, FEMALE DIVISION

| | | | |
|---------------|--------|-------|-------|
| 1. Playgirls | London | 2,769 | (£17) |
| 2. Stargazers | London | 2,660 | (£8) |
| 3. Pinsters | London | 2,631 | (£5) |

2-PERSON TEAM, REGULAR DIVISION

| | | | |
|---|-------------------|-------|-----------|
| 1. Ron Clarke-Brian Simmons | London | 1,250 | (£31) |
| 2. Rodger Brentnall-Peter Ford | London | 1,230 | (£16) |
| 3. Glen Blackmore-Peter Boardley | Hull | 1,227 | (£11) |
| 4. Al Sweet-George Weiss | London | 1,176 | (£10) |
| 5. Henry and Robert Inquieti | London | 1,174 | (£7) |
| 6. Maurice Underhill-D. Lorford | London | 1,172 | (£5) |
| 7. P. Tremain-M. Kitsberg | London | 1,170 | (£4) |
| 8. Rudy Scroggins-Wm. Strongin | Sculthorpe | 1,168 | (£3 10s.) |
| 9. { Roy Johnson-Keith Hale B. Simmons-Bill Wood | London Chatham | 1,165 | (£3 5s.) |
| 11. Morris Freeman-Donald Smith | London | 1,152 | (£3) |
| 12. Phil Yaffe-Mike Samberg | Manchester | 1,151 | (£2 10s.) |
| 13. Oscar Owide-Harold King | London | 1,150 | |
| 14. Cyr Thomas-Maurice Lever | London | 1,144 | (£2) |
| 15. Kenneth Peplow-D. Chatalain | Sculthorpe | 1,141 | |

2-PERSON TEAMS, FEMALE DIVISION

| | | | |
|-----------------------------------|--------|-------|------|
| 1. Enid King-Gladys Notley | London | 1,195 | (£9) |
| 2. Angela Macadam-Maureen Donovan | London | 1,169 | (£5) |
| 3. Shirley Morris-Iris Underhill | London | 1,116 | (£4) |

SINGLES, REGULAR DIVISION

| | | | |
|-------------------|------------|-----|-------|
| 1. P. Tremain | London | 643 | (£30) |
| 2. Pete Rolph | London | 642 | (£14) |
| 3. John Hill | London | 636 | (£9) |
| 4. George Randall | Gillingham | 634 | (£8) |

| | | | |
|---|----------------------------|-----|---------------|
| 5. Eric Lane | London | 626 | (£7) |
| 6. { Phil Perlman Ernie Woolard | London Wanstead | 620 | (£6) |
| 8. Lionel Feetham | Ipswich | 619 | (£4) |
| 9. { Alf Flowers Brian Simmons Ron Notley | London London London | 617 | (£2 13s. 4d.) |
| 12. { John Groves Doug Lyons | Hull London | 612 | (£2) |
| 14. Kenneth Peplow | Sculthorpe | 604 | |
| 15. Morris Glazer | London | 603 | (£1) |
| 16. { Ivor Arbiter Robert Carpenter | London London | 599 | |
| 18. { Gerry Keppy Frank Falkener | London London | 598 | |
| 20. Sam Allembick | London | 596 | |
| 21. { Reginald White Cyr Thomas | Ilford London | 588 | |
| 23. { Del Simmons George Mackay | Wanstead London | 587 | |
| 25. { Malcolm Sharpe David Rourke | London Saltcoats | 585 | |
| 26. { Wm. Kirkpatrick Ray Clutterbuck | Saltcoats Hull | 585 | |
| 29. Stephen Rigo | Newbury, Berks | 583 | |
| 30. Ivor Sorokin | Hove | 582 | |
| 31. { Ian Caplan Monty Adler | London Manchester | 580 | |

SINGLES, FEMALE DIVISION

| | | | |
|-----------------------|------------------------|-----|-------|
| 1. Edith Williams | Birmingham | 638 | (£12) |
| 2. Jennie Jordan | Bentwaters, Suffolk | 631 | (£6) |
| 3. Audrey Young | Bentwaters, Suffolk | 607 | (£4) |
| 4. Lesly Ward-Jackson | London | 602 | (£3) |
| 5. Brenda Foster | Uxbridge, Middlesex | 598 | (£2) |
| 6. Enid King | London | 591 | (£1) |
| 7. Betty Stennings | London | 587 | |
| 8. Peggy Kent | London | 586 | |
| 9. Maureen Donovan | London | 583 | |

ALL EVENTS, REGULAR DIVISION

| | | | |
|---------------------|------------|-------|-------|
| 1. Brian Simmons | London | 1,912 | (£20) |
| 2. Donald Chatalain | Sculthorpe | 1,792 | (£10) |
| 3. Alf Flowers | London | 1,790 | (£8) |
| 4. Gus Bourcier | London | 1,771 | (£5) |
| 5. Wm. Strongin | Sculthorpe | 1,762 | (£2) |
| 6. Peter Ford | London | 1,737 | |
| 7. Cyr Thomas | London | 1,731 | (£1) |
| 8. Robert Crowley | Sculthorpe | 1,727 | |
| 9. Roy Barlow | London | 1,726 | |

ALL EVENTS, FEMALE DIVISION

| | | | |
|-------------------|--------|-------|------|
| 1. Enid King | London | 1,804 | (£6) |
| 2. Angela Macadam | London | 1,683 | (£3) |
| 3. Rhoda Brewer | London | 1,634 | (£2) |

*Each event winner also receives a championship trophy: 2nd and 3rd also receives a trophy.

**2011 COMMONWEALTH TENPIN BOWLING
CHAMPIONSHIPS
Malaysia**

Team England and the BTBA welcome back
Nicki Ainge, Hayley White, Matt Chamberlain, Matt Miller
together with Manager, Jon Zadel
and warmly CONGRATULATE them on bringing home
3 Gold, 1 Silver and 2 Bronze Medals
A magnificent achievement of which they should be very
proud
Well done to all!

The BTBA Chairman and National Council
wish the very best of bowling to

| | |
|-------------------|-----------------|
| Autum Chamberlain | Elliot Crosby |
| Hannah Frost | Matthew Fidgett |
| Danielle Gates | Christopher Lam |
| Bethany Hedley | Michael Nock |

who are representing their country at the
2011 EUROPEAN YOUTH CHAMPIONSHIPS being held in
Germany
17th – 24th April

LIST OF COMPETITORS.

| <u>COMPETITORS</u> | <u>HOME CENTRE</u> | <u>ENTRY</u> | <u>AVERAGE</u> |
|--------------------|--------------------|--------------|----------------|
| AGATE Jason | Woking | AE73 | 215 |
| ALDER Jamie | Romford | AE94 | 214 |
| ALLEN Steve | Marham | AE68 | 204 |
| ALLSEBROOK Richard | Sheffield | AE114 | 223 |
| ANDERSON Chris | Croydon | DS47 | 154 |
| ANTHILL Ian | Stirchley | AE55 | 197 |
| ARMER Brett | Romford | AE23 | 198 |
| ARNOLD Brian | Worthing | AE98 | 196 |
| ATKINS Stuart | Finchley | AE75 | 176 |
| ATKINSON Steven | Sheffield | AE114 | 207 |
| ATTARD Sean | Southend | AE39 | 190 |
| AYRES Jake | Romford | T110 | 170 |
| | | | |
| BAKER Dean | Romford | AE110 | 184 |
| BAKER Lee | Romford | AE110 | 178 |
| BALAAM Gareth | Peterborough | AE103 | 195 |
| BALAAM Richard | Peterborough | AE103 | 206 |
| BALDWIN Geoff | Boston | TDS66 | 156 |
| BALDWIN Pete | Eastbourne | AE76/9 | 174 |
| BANHAM Fredrick | Dunstable | AE23 | 198 |
| BARKER David | Crawley | AE105 | ? |
| BARLOW Gary | Sheffield | AE5 | 211 |
| BARRETT Craig | Dunstable | AE95 | 202 |
| BAYES Ashley | Norwich | AE20 | 148 |
| BEARD Cliff | High Wycombe | DS104 | 165 |
| BEARDMORE Graham | Guildford | TDS28 | 197 |
| BEDFORD Martin | Southend | TS112 | 170 |
| BENNETT Alan | Leeds | AE6 | 205 |
| BESGROVE Paul | Romford | AE94 | 196 |
| BESZELZEN Jamie | Southend | TS112 | 129 |
| BILLINGS Paul | Wokingham | AE65 | 213 |
| BIRCH Trevor | Havant | DS36 | 215 |
| BLEZARD Mark | Tolworth | TDS62 | 192 |
| BONFIELD Daniel | Dunstable | AE11 | 257 |
| BOSWELL Philip J | Nuneaton | AE64 | 192 |
| BOOTH Adam | Dunstable | AE73 | 210 |
| BOTTOMLEY Jamie | | AE49 | 200+ |
| BOTTOMLEY Steve | Dunstable | AE39 | 214 |
| BOYDEN Andrew | Walton Pier | AE39 | 219 |
| BREHAUT Mark | Guernsey | TDS12 | 202 |
| BRILL Andrew | Dunstable | DS83 | 133 |
| BROCKLEHURST John | Worthing | AE98 | 181 |
| BROOKER Andy | Worthing | AE105 | 178 |
| BROOKER Paul | Worthing | AE105 | 203 |
| BROWN Alan | Crawley | AE43 | 185 |

E & EO.

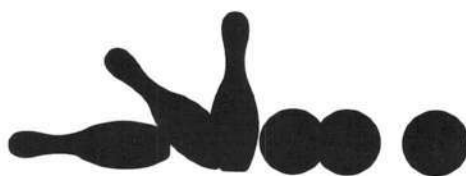


MEN

| | | | |
|----------------|--------------|--------|-----|
| BROWN Geoff | Peterborough | AE5 | 206 |
| BROWN Ian | Norwich | T46 | 190 |
| BROWN Ian | Nuneaton | AE64 | 194 |
| BROWN Lewis | | AE114 | 203 |
| BROWN Mike | Maldon | AE80 | 177 |
| BRUCE Steve | Havant | AE115 | 212 |
| BUCK Chris | Dunstable | DS | 201 |
| BUCKNER Martin | Romford | AE94 | 173 |
| BUCKNER Steve | Romford | AE95 | 183 |
| BULLER Jai | Norwich | AE46 | 200 |
| BURCK Sam | Aylesbury | AE108 | 193 |
| BURFOOT Grant | Peterborough | AE90/1 | 174 |
| BURROWS Lee | Ilkeston | AE58 | 218 |
| BURTON Ken | Havant | AE115 | 198 |

| | | | |
|-------------------|------------------|---------|------|
| CADDY Paul | Newbury | AE68 | 207 |
| CARLEY Richard | Martlesham Heath | AE40 | 205 |
| CARNALL Steve | Gravesend | AE5 | 209 |
| CARTER Craig | Fareham | DS103 | 199 |
| CARTER Paul | Leeds | AE111 | 211 |
| CATTELL Myke | Telford | AE101 | 179 |
| CAWTHORNE Julian | Northampton | AE61 | 195 |
| CHAMBERLAIN Matt | Poole | AE49 | 200+ |
| CHAMBERS Justin | Romford | AE110 | 176 |
| CHATFIELD Chris | Tolworth | AE71 | 169 |
| CHATFIELD Lee | Tolworth | AE26 | 215 |
| CHURLEY Simon | Braintree | TS107 | 159 |
| CLARK Andrew | Dunstable | AE24 | 193 |
| CLAYTON Matthew | Washington | AE87 | 204 |
| CLEAVER Scott | Romford | AE61 | 215 |
| CLOUGH Andy | Acocks Green | TDS9 | 210 |
| COCKER Lee | Romford | AE61 | 228 |
| COLLER Ken | Worthing | AE98 | 186 |
| COOK Charlie | Eastbourne | AE76/8 | 170 |
| COOK Daniel | Lincoln | AE25 | 174 |
| COOPER Scott | Dunstable | AE79 | 206 |
| COX Gavin | Tamworth | AE21 | 158 |
| COX Mike | Crawley | AE42 | 189 |
| CRIPPEN Paul | Worcester | AE5 | 204 |
| CRISP Elliot | Dereham | AE23 | 180 |
| CRITTENDEN Roger | Alconbury | AE113 | 193 |
| CRONIN John | Lewisham | AE75 | 172 |
| CROSBY Elliot | Tolworth | AE51 | 200+ |
| CROSBY Lee | Tolworth | DS45 | 143 |
| CROUCH Colin | Peterborough | AE115 | 200 |
| CROUCH Simon | Eastbourne | TDS76/8 | 177 |
| CROWHURST Malcolm | Eastbourne | AE76/8 | 178 |
| CUNDY Darren | Ilkeston | AE48 | 200+ |
| CUNNINGHAM Paul | Norwich | AE70 | 209 |

E & EO.



| | | | |
|-----------------|-----------------|-------|-----|
| D'ARCY Jake | Bromborough | AE24 | 181 |
| DALY Ryan | Norwich | AE93 | 200 |
| DAVIS Mark | Tolworth | TDS62 | 196 |
| DAWSON Mike | | TDS9 | 190 |
| DEW Cliff | Gravesend | AE26 | 196 |
| DIDUR Michael | Shipley | AE33 | 201 |
| DILLON Paul | Alconbury | AE113 | 169 |
| DONOGHUE Jake | Tunbridge Wells | AE25 | 184 |
| DOREE Ben | Southend | TS99 | 178 |
| DOWINTON Reuben | Guernsey | TDS13 | 163 |
| DRAPER Darren | Maldon | AE80 | 204 |
| DYSON Adam | Norwich | AE20 | 150 |

| | | | |
|----------------|-----------------|-------|-----|
| EDWARDS Calvin | Dunstable | AE25 | 173 |
| EDWARDS Greg | Madison Heights | AE40 | 200 |
| ELLIOTT Garry | Sunderland | DS60 | 198 |
| ELLIOTT Jamie | Crewe/Stoke | AE20 | 168 |
| ELLIOTT Karl | Tolworth | TDS62 | 182 |
| ELLIS Chris | Madison Heights | AE40 | 198 |
| ELLIS Craig | Wellingborough | AE58 | 204 |
| ELLIS Darren | Basingstoke | AE103 | 190 |
| ENGLISH Chris | Madison Heights | AE39 | 220 |
| ENGLISH Matt | Ipswich | AE86 | 184 |
| EVERITT Steve | Romford | DS61 | 192 |
| EXELL Larry | Tolworth | AE71 | 193 |

| | | | |
|-------------------|------------------|---------|------|
| FARMER Steve | Southend | AE99 | 182 |
| FARRAH Lewis | Hull | AE21 | 160 |
| FARRAR Michael | Tolworth | AE81 | 224 |
| FAULKNER Malcolm | Eastbourne | AE76/8 | 179 |
| FIDGETT Matthew | Norwich | AE51 | 200+ |
| FITZPATRICK James | Romford | AE110 | 196 |
| FOLEY Steve | Martlesham Heath | AE86 | 175 |
| FORDE Luke | Southend | TD112 | 149 |
| FORSYTH Matthew | Airport | AE10/11 | 220 |
| FRASER Gary | Alconbury | AE102 | 185 |
| FRENCH Dan | | AE26/97 | 205 |
| FRUEN Matt | Crawley | AE42 | 207 |
| FULLBROOK Mark | Scunthorpe | AE59 | 198 |

| | | | |
|---------------|---------|------|-----|
| GAMMAGE Terry | Swindon | AE2 | 184 |
| GARDNER Rod | Norwich | DS41 | 189 |
| GIBBS Trevor | Norwich | AE70 | 190 |

E & EO.



MEN

| | | | |
|-------------------|------------------|---------|------|
| GIDDENS Steve | Wellingborough | AE58 | 200 |
| GILES Matt | Norwich | AE93 | 206 |
| GILES Matt | Blackburn | AE73 | 227 |
| GILL Sukky | Dunstable | AE88 | 206 |
| GLENVILLE Len | Tunbridge Wells | DS54 | 186 |
| GLOVER Malcolm | Romford | AE67 | 189 |
| GODFREY David | Worthing | | |
| GOFF Mike | Martlesham Heath | AE86 | 182 |
| GOLD Martin | Finchley | AE75 | 153 |
| GOLDSWAIN Josh | Airport | AE26 | 234 |
| GOODE Leigh | Tolworth | T62 | 185 |
| GOODRIDGE Dax | | TDS8 | 170 |
| GOODWIN Dave | Romford | AE38 | 181 |
| GOODWIN Robert | Romford | AE82 | 207 |
| GRAHAM Les | Romford | DS96 | 178 |
| GRAINGER David | Shiple | AE33 | 193 |
| GRANADOS Mark | Lincoln | AE102 | 190 |
| GRANT Les | Sheffield | AE6 | 193 |
| GRAY Damian | Airport | AE11 | 228 |
| GRAY James | Madison Heights | AE25 | 175 |
| GREEN Alex | Madison Heights | AE22 | 217 |
| GREEN Christopher | Blackburn | AE91 | 217 |
| GREEN Jake | Chelmsford | T82 | 159 |
| GREEN Martin | Norwich | AE92 | 187 |
| GREEN Paul | Dunstable | TS88 | 163 |
| GREENACRE Roger | Eastbourne | TDS76/8 | 156 |
| GREGORY Patrick | Norwich | AE21 | 160 |
| GREIG Dave | Brize Norton | AE101 | 182 |
| GRIFFIN Nigel | Peterborough | TD90 | 173 |
| GRIFFIN Sean | Peterborough | AE90 | 206 |
| GUIARMY Phillip | Tunbridge Wells | AE24 | ? |
| | | | |
| HADLOW Ryan | Cliftonville | AE53 | 180 |
| HALE Garry | Guernsey | TDS12 | 194 |
| HALL Matt | Farnborough | AE69 | 215 |
| HALLIWELL Mike | Carlisle | AE29 | 202 |
| HAMILTON Alex | Nuneaton | AE48 | 200+ |
| HAMLET Steve | Peterborough | AE92 | 202 |
| HANDLEY Dave | Romford | AE67 | 198 |
| HARDING Rob | Sheffield | AE114 | 233 |
| HARMAN Nick | Eastbourne | AE76/8 | 184 |
| HARRIS Bob | Maldon | AE80 | 178 |
| HARRIS Matt | Maldon | AE80 | 175 |
| HARRIS Phillip | Eastbourne | TDS76/8 | 200 |
| HART Paul | Dunstable | AE83 | 151 |
| HARVEY Ben | Romford | AE94 | 219 |
| HASKINS Jim | Tolworth | AE81 | 210 |
| HASTINGS Mike | Romford | AE56 | 181 |

E & EO.



| | | | |
|-------------------|--------------|---------|-----|
| HEAD Graham | Romford | AE75 | 166 |
| HEMPSALL Terry | Swindon | AE1/2 | 171 |
| HERBERT Jon | Tolworth | TDS54 | 193 |
| HILL Ozzy | Norwich | AE70 | 187 |
| HODGE Keith | Gravesend | AE6 | 198 |
| HOLDER Gareth | Dunstable | AE69 | 229 |
| HOLDSWORTH Marcus | Peterborough | DS31 | 163 |
| HOLLANDS Ian | Hull | AE60 | 198 |
| HONISETT Allan | Eastbourne | TDS76/8 | 175 |
| HOOPER Curtis | Chesterfield | AE85 | 221 |
| HORTON Kev | Colcraine | TDS9 | 194 |
| HOWLAND Chris | Romford | TDS56 | 166 |
| HUME Chris | Southend | AE99 | 189 |
| HUNTER Kev | Aylesbury | AE101 | 205 |
| HUNTER Roger | Romford | AE67 | 181 |
| HURST Roger | Aylesbury | AE108 | 183 |
| HUSSEY Sean | Worthing | AE23 | 203 |
| | | | |
| INCE Mick | Sunderland | AE30 | 184 |
| IRELAND Andrew | Alconbury | AE113 | 227 |
| IRELAND Steven | Aylesbury | AE108 | 178 |
| IRVANI Mo | Guildford | TDS28 | 192 |
| | | | |
| JAAP Chris | Lincoln | AE69 | 217 |
| JACKSON Mark | Peterborough | DS31 | 163 |
| JACKSON Owen | Tamworth | AE22 | 196 |
| JAMES Andy | Airport | | 185 |
| JARVIS Les | Croydon | DS47 | 174 |
| JEFFERSON Lee | Washington | AE60 | 186 |
| JEGGO Martin | Dunstable | S88 | 212 |
| JENKINS Al | Firth Park | AE30 | 215 |
| JENNINGS Mark | Lewisham | AE35 | 166 |
| JENNINGS Mike | Crawley | AE42 | 200 |
| JOHNSON Dave | Worcester | AE55 | 223 |
| JOLLEY Deno | Crawley | AE43 | 183 |
| JONES Andy | Worcester | AE55 | 210 |
| JONES Matt | Leeds | AE111 | 211 |
| JORDAN Craig | Norwich | AE93 | 179 |
| | | | |
| KAY Steve | Leeds | AE111 | 210 |
| KEATES Les | Aylesbury | AE101 | 185 |
| KEEBLE Matthew | Southend | TD112 | 163 |
| KENDALL Keith | Tolworth | TDS45 | 177 |
| KENNEDY Ian | Shipley | TD34 | 190 |

E & EO.



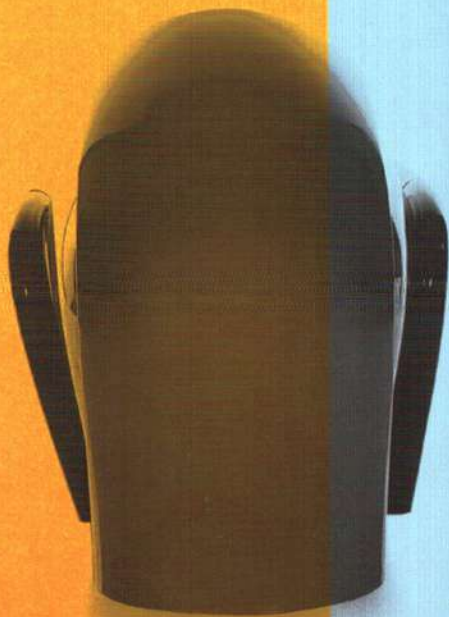
MEN

| | | | |
|---------------------|-----------------|-----------|------|
| KERSEY Alan | Romford | AE61 | 185 |
| KINDER Jordan | Peterborough | AE24 | 187 |
| KNIGHT Michael | Peterborough | AE90 | 184 |
| KNIGHT Russell | Torquay | AE79 | 184 |
| | | | |
| LAM Christopher | Liverpool | AE51 | 200+ |
| LAMM Jordan | Mildenhall | AE40 | 186 |
| LANE Brandon | Lakenheath | AE41 | 206 |
| LANGHAM Harry | Wokingham | TDS65 | 189 |
| LANGLEY Andrew | Kings Lynn | AE67 | 184 |
| LAUMETS Jaan | Romford | DS109 | 182 |
| LAW Ross | Norwich | AE92 | 205 |
| LAWLESS John | Shipley | AE33 | 197 |
| LAWRENCE Keith | Boston | TDS66 | 155 |
| LAY Raymond | Dunstable | AE108/109 | 210 |
| LE TISSIER Simon | Guernsey | TDS12 | 209 |
| LEE Tony | Lincoln | AE69 | 209 |
| LEMANQUAIS Paul | Havant | T32 | 195 |
| LEWIS Paul | Dunstable | AE95 | 215 |
| LITTNER Robbie | Dunstable | AE83 | 184 |
| LITTNER Teddy | Dunstable | AE83 | 178 |
| LIVESEY Jeff | Romford | AE95 | 162 |
| LOCHEAD Matthew | Bromborough | AE85 | 204 |
| LOVELL Rick | Guernsey | TDS12 | 170 |
| LYONS Shane | Lyneham | AE102 | 168 |
| | | | |
| MacDONALD Peter | Nuneaton | AE64 | 188 |
| MACHON Chritian | Guernsey | TDS13 | 162 |
| MacPHERSON Alistair | Brize Norton | AE68 | 206 |
| MADDOCK Chris | Telford | AE102 | 177 |
| MADDOCK Paul | Lincoln | AE68 | 187 |
| MALCOLM Chris | Shipley | AE33 | 183 |
| MALLET Simon | Norwich | AE93 | 192 |
| MANDERS Chris | Tolworth | AE42 | 186 |
| MARLOWE Rupert | Ipswich | TS86 | 194 |
| MASKELYNE Colin | Bielefeld | TDS8 | 181 |
| MAXWELL Adam | Watford | AE22 | 195 |
| MAZZOTTA Anthony | Swindon | AE2 | 195 |
| McARTHUR Craig | Madison Heights | AE86 | 203 |
| McCORKINDALE Iain | Airport | AE10 | 230 |
| McCRACKEN Stewart | Peterborough | AE90 | 199 |
| McDERMOTT Allan | Germany | TDS8 | 185 |
| McGEACHIE Allan | Romford | AE38 | 185 |
| McKIE Steve | Swindon | AE2 | 180 |
| McLEAN Steve | Chelmsford | AE38 | 193 |
| McLELLAN Duncan | Cliftonville | TS53 | 178 |

E & OE.



Welcome to Switchland



Bowling with
style

SWITCH[®]
ENTERTAINMENT S.A.
Distributed by: Switch Bowling UK Ltd.
Tel. +44 (1455) 851777
terryfawdington@switchbowling.co.uk

Switch[®]... the coolest thing in bowling since the invention of the ball. Exciting creative ideas and dazzling colours from Italy's leading industrial design firm add up to an eye-opening environment that brings a whole new style to bowling. www.switchbowling.com



BOWLTECH®

Bowltech UK Limited • Unit 5 • Spectrum Business Estate
Bircholt Road • Parkwood • Maidstone • Kent • ME15 9YP
Tel: 01622 683628 • Fax: 01622 683576
Email: sales@bowltech.co.uk

BOWLTECH™

on

facebook

&

You Tube

Broadcast Yourself™

[www.youtube.com/
bowltechuklimited](http://www.youtube.com/bowltechuklimited)

[www.youtube.com/
bowltechbowlingtips](http://www.youtube.com/bowltechbowlingtips)

and all over
Europe



Like the B.T.B.A.
Bowltech UK have been
supplying bowlers *and*
bowling over the years

The premier brands, all
under one roof.

Join our Bowlers Club
and visit our You Tube
TV Channels.



For details on how to join the free

BOWLTECH BOWLERS CLUB

visit: www.bowltechbowlersclub.co.uk

BOWLTECH®



KEGEL KUSTODIAN WALKER SPORT

Precision Oiling with Sanction Technology
Battery Powered for hassle free operation
DC Motors for super quiet operation
Spray-less cleaning system
NEW Touch Screen Interface
NEW Larger Capacity Processor
NEW Menu Controlled Fluid Metering Pump Output
NEW Navigation Patterns Preloaded



KEGEL KUSTODIAN ION SPORT



KEGEL CROSSFIRE

Entry Level Wick Combination Machine
6-8 Wick Pad Operation
Cam operated wick pads eliminates solenoids.
12 Lane oiling capacity upgradeable to 32+
32+ Lane Cleaning Capacity
3 Spray Head and cloth Cleaning System

From 1-100 lanes, Kegel has a lane machine to suit your needs.

Bowltech and Kegel are proud supporters of the BTBA National Championships.

Helping the Sport at all levels from International Events to your local Centre.

**MORE LANES
MORE TOURNAMENTS
WORLDWIDE**



KEGEL KUSTODIAN PLUS

Precision Oiling with Sanction Technology
Spray-less cleaning system
Cleans and Conditions in single pass
Free KOSI Software included
Optional Bluetooth Connection
The worlds most popular combination machine



KEGEL LANE MAINTENANCE SUPPLIES



One size does not fit all

www.kegel.net

Tel: 01622 683628

www.bowltech.co.uk

Style attack.



(Switch® ball return hood)

Switch® is spear-heading this major assault with exciting new bowling facilities for more entertainment, fun and sport. Designed by Pininfarina, the most renowned Italian industrial design group. And featuring the most advanced bowling technology. The invasion of style is here... it's an unstoppable force. Isn't it time to Switch? **Switch for success**

Distributed by:
Switch Bowling UK Ltd.
Tel. +44 (1455) 851777, terryfawdington@switchbowling.co.uk

 **SWITCH**[®]
ENTERTAINMENT S.A.

www.switchbowling.com

| | | | |
|-----------------|--------------|---------|------|
| MEAD Guy | Romford | DS56/7 | 167 |
| MEAD Martyn | Romford | AE56/7 | 182 |
| MEAD Sebastian | Braintree | DS57 | 141 |
| MEDLOCK Paul | Southend | AE99 | 188 |
| MICHAELS Adam | Hull | AE26 | 229 |
| MIHILL Chris | Basingstoke | AE103 | 177 |
| MILLAR Craig | Dunstable | AE74/88 | 163 |
| MILLER Lee | Aylesbury | AE97 | 205 |
| MILLER Matt | Airport | AE51 | 230 |
| MILLER Steve | Airport | AE11 | 220 |
| MIRANDA Leslie | Dunstable | DS | 190 |
| MITCHELL Geoff | Leeds | T111 | 196 |
| MITCHELL Kev | Bielefeld | TDS8 | 180 |
| MITCHENER Ryan | Airport | AE81 | 232 |
| MONTGOMERY Luke | Poole | AE85 | 196 |
| MORGAN Selwyn | Bexleyheath | AE35 | 197 |
| MORRIS Paul | Tolworth | AE54 | 215 |
| MOSS Brian | Maldon | DS80 | 164 |
| | | | |
| NEWPORT Richard | Swindon | AE2 | 181 |
| NICHOLS Rob | Nottingham | AE35 | 207 |
| NOBLE David | Eastbourne | TDS76/8 | 182 |
| NOCK Michael | Norwich | AE52 | 200+ |
| NORRISS Matt | Wokingham | T81 | 196 |
| NORTHWOOD Keith | Guildford | AE28 | 188 |
| | | | |
| OAKLEY Gary | Peterborough | AE5 | 204 |
| OATES Chris | Poole | AE49 | 200+ |
| O'CONNOR Tim | Guernsey | TDS12 | 202 |
| O'DELL Jason | Dunstable | AE79 | 218 |
| OLDFIELD Ron | Sheffield | AE29 | 200+ |
| OLIVER Joe | Dereham | AE22 | 197 |
| ORCHARD Jordan | Uttoxeter | AE24 | 181 |
| | | | |
| PARKINSON Roy | Peterborough | DS31 | 165 |
| PARKINSON Sean | Peterborough | AE21 | 159 |
| PASSFIELD Mark | Millbrook | TDS9 | 188 |
| PATRICK Mark | Worcester | AE55 | 217 |
| PAYNE Derek | Bedhampton | DS105 | 170 |
| PENN Dan | Tolworth | AE73 | 215 |
| PHILLOTT Maurie | Havant | DS36 | 204 |
| POTTLE Jon | Cliftonville | AE53 | 182 |
| POULSON Allen | Germany | TDS8 | 185 |

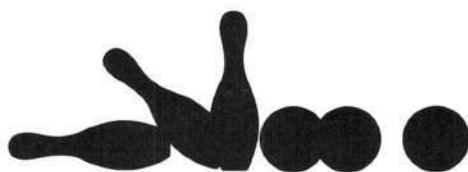
E & OE.



MEN

| | | | |
|------------------|-----------------|---------|------|
| PRESLEY Mark | Romford | AE61 | 228 |
| PROCTOR Matt | Norwich | AE46 | 200 |
| PUNTER Ben | Ipswich | AE41 | 191 |
| PUNTER Phil | Norwich | AE41 | 192 |
| PURNELL Adam | Eastbourne | AE11 | 204 |
| PURNELL David | Eastbourne | AE76/8 | 159 |
| | | | |
| QUARRY Mike | Poole | AE48 | 200+ |
| QUILTER Chris | Dunstable | AE101 | 204 |
| | | | |
| RAVEY Harry | Thatcham | TDS9 | 220 |
| RAWLINGS Dave | Crawley | AE43 | 190 |
| RELPH Jim | Crawley | AE43 | 164 |
| RENS Geoff | Wigan | AE87 | 180 |
| RICH Michael | Eastbourne | AE76/8 | 176 |
| RICHARDSON Glen | Bexleyheath | AE35 | 200 |
| RICHARDSON Ryan | Romford | AE25 | 184 |
| RIDLEY Graham | Romford | AE82 | 211 |
| RIXON Daniel | Madison Heights | AE107 | 205 |
| RIXON Keith | Madison Heights | AE107 | 173 |
| ROBERTS Brandon | Crewe/Stoke | AE23 | 198 |
| ROBERTS Tom | Eastbourne | TDS76/8 | 142 |
| ROBERTSON Gary | Dunstable | AE73 | 210 |
| ROBSON Peter | Washington | AE85 | 194 |
| RODGER Carl | Worthing | DS37 | 190 |
| ROLLINGS Iain | Wokingham | TDS65 | 197 |
| ROSE Sam | Nuneaton | AE48 | 200+ |
| ROSS Dave | Cliftonville | AE53 | 202 |
| ROSS Gregg | Grantham | AE20 | 172 |
| ROUSSELL Brian | Guernsey | TDS13 | 160 |
| RUMKEE Paul | Hull | TDS45 | 174 |
| RUST Kevin | Dunstable | AE88 | 194 |
| | | | |
| SALTER Brynn | Tunbridge Wells | AE24 | 194 |
| SAMPSON Pete | Worcester | DS55 | 204 |
| SANDERS Luke | Poole | AE85 | 193 |
| SARTER Stuart | Kings Lynn | AE97 | 202 |
| SASSIENIE Darren | Dunstable | AE83 | 194 |
| SAVIDENT Trevor | Guernsey | TDS13 | 163 |
| SCHAPPERT Jon | Alconbury | AE113 | 178 |
| SCOTT Colin | Boston | AE66 | 175 |
| SEAR Dan | Romford | AE97 | 198 |
| SEERS Ron | Tolworth | AE71 | 186 |
| SHARMAN Eddie | Boston | TDS66 | 171 |

E & OE.



| | | | |
|------------------|------------------|-------|------|
| SHARPSTONE Tony | Dunstable | DS96 | 207 |
| SHRUB Adam | Sunderland | AE60 | 185 |
| SINGLETON Mo | Wigan | AE29 | 200+ |
| SKUDDER Chris | Gravesend | AE41 | 174 |
| SMITH Alan | Romford | AE38 | 175 |
| SMITH Chris | Newbury | AE69 | 201 |
| SMITH Jack | Leeds | AE29 | 200+ |
| SMITH Mark | Leeds | AE29 | 200+ |
| SMITHERS Russell | Guildford | DS28 | 198 |
| SNASHALL Chris | Bedhampton | AE105 | 194 |
| SNIPPER Russell | Dunstable | AE83 | 189 |
| SOAR Tony | Crawley | AE42 | 175 |
| SPALDING Scott | Norwich | AE93 | 196 |
| STANDALL Chris | Tunbridge Wells | AE54 | 204 |
| STANDALL Tim | Tunbridge Wells | TDS54 | 194 |
| STANDER Frank | Romford | AE67 | 186 |
| STEWART Graham | Guildford | TDS28 | 201 |
| STEINER David | Farnborough | AE6 | 190 |
| STEVENS Richard | Romford | AE94 | 192 |
| STEVENSON Pete | Acocks Green | AE55 | 198 |
| STIFF Scott | Tolworth | TDS62 | 183 |
| STILL Anthony | Guildford | TDS28 | 200 |
| STRAW Geoff | Madison Heights | AE107 | 207 |
| STURT Jonathon | Madison Heights | AE40 | 200 |
| SWALLOW Tony | Sunderland | AE60 | 198 |
| SYKES Mike | Millbrook | AE6 | 198 |
| | | | |
| TANN Jeff | Maldon | AE80 | 193 |
| TAPPING Andrew | Tunbridge Wells | TDS54 | 211 |
| TAYLOR Colin | Washington | AE30 | 203 |
| TAYLOR Jay | Wokingham | TDS65 | 197 |
| TAYLOR Kirk | Lewisham | AE35 | 177 |
| TAYLOR Neil | Lewisham | DS35 | 184 |
| TAYLOR Nich | Chelmsford | AE82 | 180 |
| TEECE Raymond | Airport | AE10 | 230 |
| TEECE Richard | Leeds/Shiplay | AE10 | 230 |
| TEMPLE Liam | Norwich | AE20 | 165 |
| THOMPSON Dan | Romford | AE95 | 170 |
| THOMPSON Daniel | Norwich | AE21 | 158 |
| THOMSON Andrew | Martlesham Heath | TS50 | 164 |
| THORNTON Steve | Poole | AE49 | 200+ |
| THURLBY Rob | Ilkeston | AE48 | 200+ |
| TOSTEVIN Brian | Guernsey | TDS13 | 153 |
| TOWNSEND Martin | Peterborough | AE91 | 194 |
| TUCKER Charlton | High Wycombe | DS104 | 193 |
| TURNER Alan | Barnsley | AE30 | 205 |
| TURNER Adam | Washington | AE22 | 197 |
| TURNER Jeff | Tamworth | TDS9 | 185 |

E & EO.



MEN

| | | | |
|--------------------|-----------------|---------|------|
| UTTING Steve | Norwich | AE41 | 204 |
| WALKER Barry | Sunderland | AE60 | 220 |
| WALKER Neil | Tamworth | AE26 | 207 |
| WALSHAM Mike | Southend | TS112 | 160 |
| WALSTER PRINCE Tom | Nuneaton | AE64 | 192 |
| WANT Andrew | Nottingham | AE114 | 191 |
| WARNER Steve | Romford | AE97 | 222 |
| WARREN Graham | Madison Heights | AE107 | 198 |
| WATERMAN Lee | Romford | TDS45 | 190 |
| WATERMAN Trevor | Romford | TDS45 | 190 |
| WEBBER Paul | Romford | AE38 | 186 |
| WEBER Tim | Alconbury | AE113 | 192 |
| WEED Mike | Worthing | AE98 | 196 |
| WELBOURN Mick | Boston | TDS66 | 184 |
| WELLS John | Tolworth | AE10 | 235 |
| WELLS Stephen | Washington | AE87 | 182 |
| WENGER Martyn | Airport | TDS45 | 185 |
| WHIFFIN Dave | Tolworth | AE71 | 206 |
| WHITAKER Nathan | Airport | AE11 | 200 |
| WHITBREAD Les | Chelmsford | AE50 | 171 |
| WHITBREAD Simon | Lincoln | AE68 | 211 |
| WHITE Chris | Southend | AE99 | 180 |
| WHITTEN Graham | Torquay | AE79 | 181 |
| WILDMAN Steve | Newbury | AE102 | 176 |
| WILLIAMS Pete | Cliftonville | AE53 | 204 |
| WILLS Alan | Nuneaton | AE64 | 185 |
| WILLSMER Fred | Romford | TDS56/7 | 166 |
| WILMSHURST Paul | Eastbourne | TDS76/8 | 178 |
| WILSON Andrew | Wigan | AE91 | 210 |
| WINTER Jack | Norwich | AE46 | 196 |
| WINTER Mark | Norwich | AE46 | 196 |
| WRATHALL Gerry | Aylesbury | AE108 | 186 |
| WRAY Ken | Hull | AE30 | 198 |
| WRIGHT Daniel | Kings Lynn | AE90/1 | 198 |
| WYATT Darren | Basingstoke | AE103 | 180 |
| YATES Graham | Dunstable | TD74/88 | 158 |
| ZADEL Jon | Nuneaton | AE49 | 200+ |

E & OE.

LIST OF COMPETITORS.

| <u>COMPETITORS</u> | <u>HOME CENTRE</u> | <u>ENTRY</u> | <u>AVERAGE</u> |
|--------------------|--------------------|--------------|----------------|
| AINGE Nicky | Leeds | AE7 | 205 |
| ALDER Jacky | Romford | T89 | 145 |
| ALLEN Emily | Tamworth | AE18 | 198 |
| ALLEN Sue | Worcester | TDS44 | 167 |
| ANDREWS Amber | Worthing | AE37 | 186 |
| ARTHUR Rachel | Bromborough | AE84 | 194 |
| ATKINSON Jackie | Farnborough | AE4 | 182 |
| ATTERBY Gemma | Washington | AE84 | 167 |
| BADER Remy | Dunstable | AE18 | 184 |
| BAILEY Hope | Crewe/Stoke | AE16 | 163 |
| BALDWIN Lynda | Boston | DS66 | 151 |
| BANKS Fiona | Sheffield | AE72 | 220 |
| BILLINGHAM Jenny | Washington | AE58 | 218 |
| BOSWELL Sandra | Nuneaton | AE63 | 187 |
| BRADNOCK Zoe | Bushbury | AE92 | 198 |
| BROWN Angie | Woolacombe | AE3 | 196 |
| BROWN Emma | Nuneaton | AE63 | 201 |
| BRUTON Chloe | Tolworth | AE111 | 188 |
| BUCK Pauline | | DS7 | 200 |
| BUCKNER Doreen | Romford | T89 | 160 |
| CARLEY Amanda | Martlesham Heath | AE50 | 169 |
| CHAMBERLAIN Autum | Poole | AE51 | 175+ |
| CHANDLER Lorna | Lakenheath | AE116 | 151 |
| CHATBURN Victoria | Airport | AE87 | 201 |
| CLAYDON Hayley | Madison Heights | AE19 | 168 |
| COATES Tracy | Shipley | AE34 | 160 |
| COBB Sue | Kings Lynn | AE4 | 171 |
| COLLER Brenda | Worthing | T98 | 166 |
| COX Rachel | Eastbourne | AE32 | 180+ |
| CRAWLEY Verity | Poole | AE84 | 183 |
| CUNDY Jo | Ilkeston | AE7 | 216 |
| DALY Becky | Burnley | AE16 | 164 |
| DE GARIS Janette | Guernsey | TDS14 | 169 |
| DEE Fran | Watford | TDS 44 | 143 |
| DENHAM Cherise | Poole | AE37 | 202 |
| DIDUR Janet | Shipley | AE33 | 166 |
| DIMMOCK Catherine | Nuneaton | AE63 | 172 |

E & EO.



LADIES

| | | | |
|----------------------|------------------|---------|------|
| ELLIS Donna | Wellingborough | AE58 | 222 |
| ENGLISH Maggie | Nuneaton | AE63 | 165 |
| ENGLISH Natasha | Bromborough | AE19 | 169 |
| | | | |
| FORDE Marrison | Romford | T89 | 174 |
| FRENCH Helen | Guernsey | TDS14 | 162 |
| FROST Hannah | Whitstable | AE51 | 175+ |
| | | | |
| GATES Danielle | Sunderland | AE51 | 175+ |
| GILES Julie | Dunstable | AE27 | 179 |
| GILES Sarah | Dunstable | DS27 | 124 |
| GILES Zara | Blackburn | AE72 | 220 |
| GODFREY Michele | Worthing | AE115 | 164 |
| GOULD Stacey | Nuneaton | AE63 | 182 |
| | | | |
| HALE Stephanie | Guernsey | TDS14 | 169 |
| HAMLET Rebecca | Peterborough | AE92 | 199 |
| HANNAN-WOODS Cali | Wigan | AE72 | 200 |
| HARMAN Helen | Eastbourne | TDS76/8 | 125 |
| HARRAD Bethany | Whitstable | AE17 | 143 |
| HASTINGS Sheila | Romford | TDS56 | 149 |
| HAWES Vicky | Dunstable | AE27 | 201 |
| HEDLEY Bethany | Watford | AE51 | 175+ |
| HEILBRON Amy | Wolverhampton | AE27 | 184 |
| HEMPSALL Pam | Norwich | DS1/2 | 145 |
| HILL Nikki | Norwich | AE70 | 159 |
| HODGE Jan | Gravesend | AE3 | 182 |
| HODGES Gill | Swindon | AE1 | 166 |
| HOPCROFT Danielle | Lincoln | AE32 | 198 |
| HUMPHREYS Leta | Ipswich | AE1 | 164 |
| HUSBAND Lauren | Washington | AE84 | 182 |
| | | | |
| IVORY Laura | Tolworth | AE37 | 210 |
| | | | |
| JOHN Lisa | Worthing | AE7 | 220 |
| JOHNCOCK Carrie-Anne | Whitstable | AE17 | 160 |
| JONES Kelly | Bromborough | AE17 | 143 |
| | | | |
| KNIGHT Michaela | Peterborough | AE90 | 184 |
| KNOWLES Barbara | Martlesham Heath | AE50 | 167 |

E & EO.



| | | | |
|---------------------|-----------------|-------|------|
| LACY Emma | Walton Pier | AE50 | 174 |
| LAM Jordine | Liverpool | AE87 | 190 |
| LAWLESS Cath | Shipleigh | AE34 | 141 |
| LIVESEY Debbie | Romford | T89 | 162 |
| LEWIS Mandy | Swindon | AE1 | 175 |
| LOFTY Tracy | Airport | TDS44 | 157 |
| LONGWORTH Charlotte | Millbrook | AE16 | 162 |
| MACHON Dannie | Guernsey | TDS14 | 179 |
| MALLOY Shannon | Chelmsford | T82 | 140 |
| MARCHAM Laura | Nuneaton | AE37 | 205 |
| MAUGER Sam | Guernsey | TDS15 | 153 |
| MAXWELL Amy | Watford | AE18 | 153 |
| McABE Charlene | | AE | 152 |
| McCARTHY Teresa | Norwich | AE70 | 178 |
| McGEACHIE Trish | Romford | DS38 | 164 |
| McIVER Katrina | Ilkeston | AE7 | 210 |
| MILLS Hillary | Tolworth | DS71 | 160 |
| MONTGOMERY Jessica | Havant | AE19 | 170 |
| O'DELL Anna | Dunstable | DS79 | 195 |
| ONSLOW Jools | Swindon | T1 | 164 |
| ORANGE Carol | Shipleigh | AE34 | 164 |
| OUTRIM Tricia | Farnborough | AE3 | 183 |
| OVERALL Sarah | Tolworth | AE32 | 205 |
| PARSLOW Karen | Aylesbury | AE27 | 182 |
| PAYNE Wendy | Scunthorpe | AE4 | 179 |
| PEACH Kimberley | Poole | AE18 | 184 |
| PENNY Kirsten | Dunstable | AE72 | 220 |
| POYSER Katie | Guernsey | TDS15 | 135 |
| PRATT Brenda | Ilkeston | AE4 | 178 |
| PRESCOTT Grace | Tunbridge Wells | AE17 | 154 |
| PROUT Nicky | Bristol | AE4 | 169 |
| PURNELL Sarah | Eastbourne | AE37 | 215 |
| RAWLINGS Rachel | Crawley | AE42 | 194 |
| REAY Keira | Leeds | AE51 | 175+ |
| RIPPON Sue | Peterborough | DS31 | 169 |
| ROBILLIARD Linda | Guernsey | TDS14 | 173 |
| ROUSSELL Sylvia | Guernsey | TDS15 | 139 |
| RUMKEE Hayley | Poole | AE71 | 210 |
| RUMKEE Margaret | Hull | TDS44 | 132 |

E & EO.



LADIES

| | | | |
|-------------------|-------------------|----------|-----|
| SARGENT Samantha | Worthing | AE19 | 178 |
| SAVIDENT Babs | Guernsey | TDS15 | 149 |
| SCOTT Megan | | AE19 | 173 |
| SEVEL Lesley | Romford | AE75 | 156 |
| SLINN Amanda | Ashton under Lyne | AE16 | 161 |
| SMITH Jemma | Tolworth | AE7 | 194 |
| SNASHALL Dawn | Bedhampton | AE105 | 196 |
| SPENCLEY Gene | Dunstable | AE27 | 165 |
| STAUDINGER Cassie | Madison Heights | AE39 | 200 |
| STAVELEY Amy | Uttoxeter | AE18 | 180 |
| STEINER Jan | Farnborough | AE3 | 180 |
| | | | |
| TAMBLYN Helen | Lewisham | AE71 | 198 |
| TAGG Katie | Grantham | AE17 | 165 |
| TAYLOR Alison | Wokingham | AE65 | 210 |
| TOLMAN Bev | Taunton | AE3 | 179 |
| TSAPPIS Gemma | Romford | AE81 | 197 |
| TURNER Tanya | Romford | TS89/106 | 142 |
| | | | |
| WAKEFIELD June | Shipley | AE34 | 149 |
| WATERS Lesley | Whitstable | AE84/5 | 177 |
| WENGER Brenda | Watford | TDS44 | 146 |
| WHITE Hayley | Fareham | AE32 | 226 |
| WHITE Pat | Airport | | |
| WICKLOW Kate | Dunstable | AE79 | 189 |
| WILLOUGHBY Hannah | Peterborough | AE16 | 161 |
| WILLSMER Suzanne | Romford | DS57 | 157 |
| WILSON Di | Swindon | AE1 | 157 |
| WINTER Karen | Guernsey | TDS15 | 144 |

E & OE.



BOWLTECH®

All of us at Bowltech would like to thank every bowler taking part for their interest and dedication to the sport.

In these difficult times we respect your continued involvement and support.

Fifty years of Tenpin Bowling in the UK, 50 years of innovation and development, and we are proud to have been there for 40 of those years!

Congratulations also to the BTBA, and to the many unsung volunteers and dedicated members, coaches, secretaries and other regional and national bodies who give so so much to help the sport.

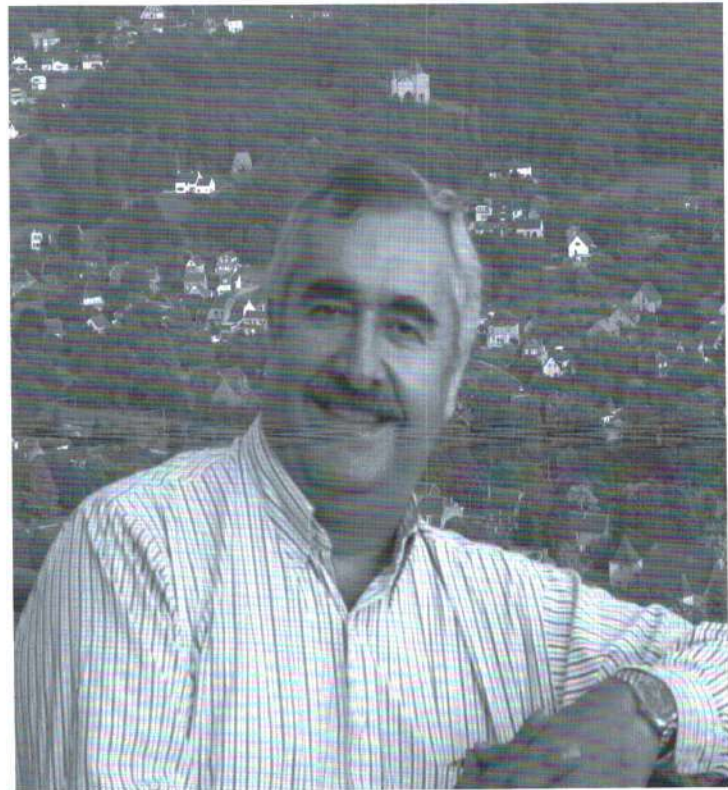


Bowltech, as well as the many Bowling Companies we represent, will continue to strive for the betterment of the sport, and will continue to support it at all levels.

Good Luck

Nick Keppe

President, Bowltech UK Ltd.



British Tenpin Bowling Association



INTERNATIONAL MEDAL WINNERS

Adult (Male)

| | TEAM | TRIOS | DOUBLES | INDIVIDUAL | | TEAM | TRIOS | DOUBLES | INDIVIDUAL |
|------|-----------------|------------|---------|------------|--------|------|------------------|---------|------------|
| 1965 | Tony Blanchett | | | Gold | Silver | 1978 | Doug McNulty | Gold | |
| | Terry Sullivan | | | Gold | | | Jez Darvill | Gold | |
| 1967 | David Pond | Bronze | | Gold | Gold | | Geoff Buck | Gold | |
| | Chris Buck | Bronze | | | | | Tommy Marshall | Gold | |
| | Tony King | Bronze | | | | | Gerry Bugden | Gold | |
| | Terry Sullivan | Bronze | | | | | Jon Reeves | Gold | |
| | David Waugh | Bronze | | | | | Richard Phillips | | Silver |
| | Steve Russell | Bronze | | | | 1979 | Jon Reeves | Silver | |
| | Jess Morley | | | Gold | | | Gerry Bugden | Silver | Gold |
| 1969 | Brian Michael | Gold/Bron | | | | | Tommy Marshall | Silver | |
| | Tony Samuels | Gold/Bron | | | | | Jez Darvill | Silver | |
| | Bernie Caterer | Gold/Bron | | | | | Geoff Buck | Silver | |
| | Terry Sullivan | Gold/Bron | | | | | Doug McNulty | Silver | |
| | David Pond | Gold/Bron | | | | 1980 | Geoff Buck | Bronze | |
| | Bobby Mansfield | Bronze | | | | | Tommy Marshall | Bronze | |
| | Clive Thomas | Bronze | | | | | Nev Robinson | Bronze | |
| | Brian Wilkins | Bronze | | | | | Roy Bowers | Bronze | |
| 1970 | Colin Presland | Silver | | | | | Bernie Caterer | Bronze | |
| | Jon Reeves | Silver | | | | | Alan Fawcett | Bronze | |
| | Bernie Caterer | Silver | | | | | Gary Barton | | Gold |
| | Geoff Liddiard | Silver | | | | 1983 | Chris Buck | | Gold |
| | David Pond | Silver | | | | | Alan Fawcett | | Gold |
| | Bobby Mansfield | Silver | | | | | Ken Johnson | | Silver |
| 1972 | Eric Butcher | Silver | | | | 1990 | Graham Matthews | | Silver |
| | Dave Staples | Silver | | | | 1993 | Paul Delaney | | Silver |
| | John Dawson | Silver | | | | 1996 | Wayne Greenall | | Gold |
| | Geoff Liddiard | Silver | | | | 1997 | Richard Hood | | Bronze |
| | Bernie Caterer | Silver | | | | | Steve Thornton | | Bronze |
| | Brian Michael | Silver | | | | | Wayne Greenall | | Bronze |
| 1973 | Bernie Caterer | Silver x 2 | | Gold | | 1998 | Richard Hood | | Silver |
| | Paul Scottow | Silver x 2 | | | | 1999 | Richard Hood | | Silver |
| | Dave Staples | Silver | | | | | Alan Edwards | | Silver |
| | Tommy Marshall | Silver x 2 | | | | 2001 | Steve Thornton | Gold | Gold |
| | Ralston Reid | Silver x 2 | | | | | Nick Froggatt | Gold | Gold |
| | Eric Butcher | Silver | | | | | Jon Zadel | Gold | |
| | Gerry Bugden | Silver | | | | | Chris Snashall | Gold | |
| | Peter Stoye | Silver | | | | | Scott Allison | Gold | |
| | Les Sher | Silver | | | | | Ron Oldfield | Gold | |
| 1975 | Chris Buck | Bronze | | | | 2002 | Nick Froggatt | | Silver |
| | Geoff Buck | Bronze | | | | 2003 | Ben Frost | | Gold |
| | Gerry Bugden | Bronze | | | | 2004 | Anthony Meehan | | Silver |
| | Eric Butcher | Bronze | | | | 2005 | Alex Christofi | | Gold |
| | Bernie Caterer | Bronze | | Gold | | 2006 | James Vile | | Bronze |
| | Cass Edwards | Bronze | | | | | Dominic Barrett | | Bronze |
| | Brian Michael | Bronze | | Gold | | | Daniel Stride | | Silver |
| | Jon Reeves | Bronze | | | | | Mike Quarry | | Silver |
| 1976 | Bernie Caterer | Silver | | | | 2007 | Dominic Barrett | | Silver |
| | Del Delaney | Silver | | | | | Darren Cundy | | Silver |
| | Geoff Buck | Silver | | | | | Mike Quarry | | Silver |
| | Alan Fawcett | Silver | | | | 2008 | Dominic Barrett | | Silver |
| | Kevin Lamb | Silver | | | | 2009 | Stuart Williams | Bronze | Bronze |
| | Bobby Mansfield | Silver | | | | | Dominic Barrett | Bronze | Bronze |
| 1977 | Ralston Reid | Bronze | | | | | Matt Chamberlain | Bronze | Bronze |
| | Del Delaney | Bronze | | | | | Matt Miller | Bronze | |
| | Alan Fawcett | Bronze | | | | | John Wells | Bronze | |
| | Tommy Marshall | Bronze | | | | | Mike Quarry | Bronze | |
| | Roger Creamer | Bronze | | | | 2010 | Dominic Barrett | | Bronze |
| | Phil Jones | Bronze | | | | | Matt Miller | | Silver |
| | Geoff Buck | Bronze | | | | | | | |
| | Gerry Bugden | Bronze | | | | | | | |

INTERNATIONAL MEDAL WINNERS

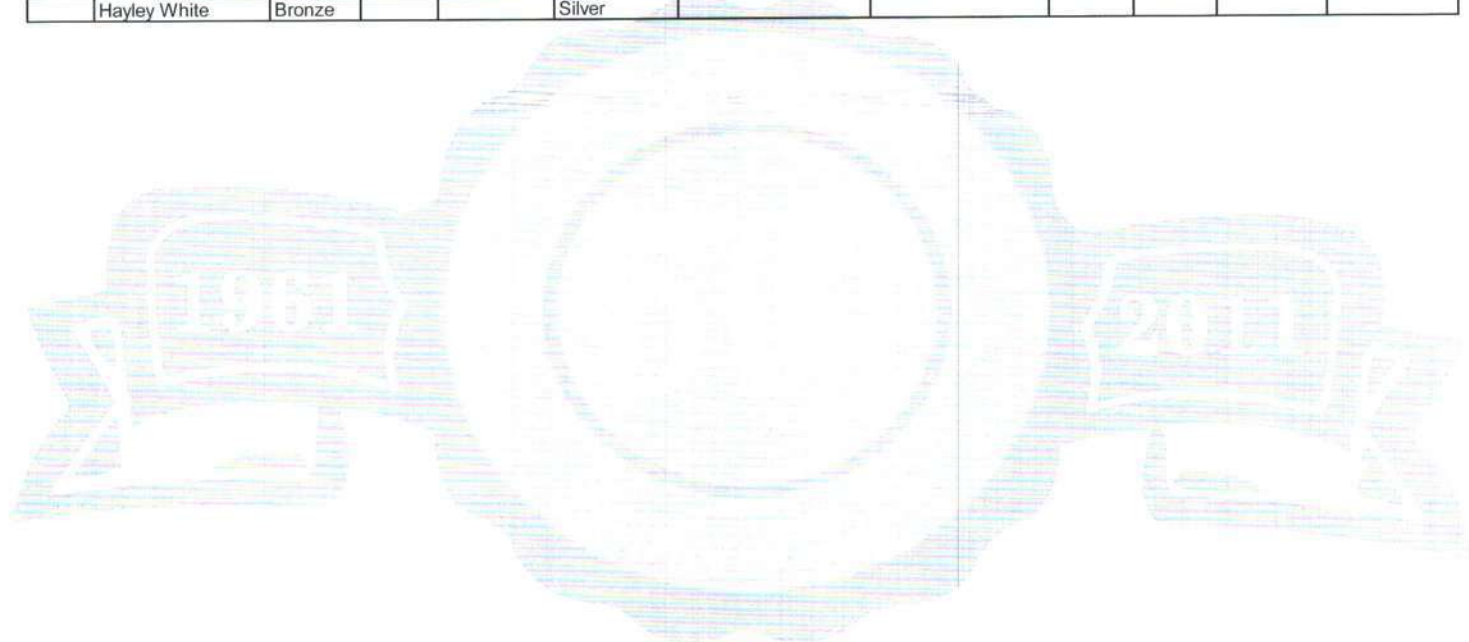
Adult (Female)

| | TEAM | TRIOS | DOUBLES | INDIVIDUAL | | TEAM | TRIOS | DOUBLES | INDIVIDUAL |
|------|------------------|--------|---------|-------------|------|------------------|--------|---------|-------------|
| 1965 | Rhoda Brewer | Gold | | | 1997 | Pauline Buck | Bronze | Silver | |
| | Gillian Hunt | Gold | | | | Kimberley Oakley | Bronze | | |
| | Sue Bland | Gold | | | | Kirsten Penny | Bronze | | |
| | Muz Rudge | Gold | | | | Mandy Lewis | | | Gold |
| | Pip Care | Gold | | | 1998 | Pauline Buck | Bronze | | Bron/Silver |
| 1969 | Dolly Miles | Gold | | | | Rebecca Churcher | Bronze | | |
| | Joan Primmer | Gold | | | | Jo Harries | Bronze | | |
| | Margaret Shaw | Gold | | Gold | | Nikky Harvey | Bronze | | |
| | Audrey Tew | Gold | | Gold | | Lisa John | Bronze | | |
| | Pauline Thompson | Gold | | | | Kirsten Penny | Bronze | | |
| 1973 | Carole Cuthbert | Gold | | | 1999 | Jackie Clarke | | | Silver |
| | Ena Prattley | Gold | | | | Kirsten Penny | | | Bronze |
| | Janet Morrison | Gold | | | 2000 | Rachel Aldersley | Silver | | |
| | Margaret Shaw | Gold | | | | Louise Taylor | Silver | | |
| | Hilda Clifford | Gold | | | | Lisa Gardner | Silver | | |
| 1975 | Lesley Potter | | | Bronze | | Ann Smith | Silver | | |
| 1976 | Audrey Pond | Silver | | | | Jan Greenstock | Silver | | |
| | Shelagh Leonard | Silver | | | | Lynn Walker | Silver | | |
| | Lesley Potter | Silver | | | | Kirsten Penny | | | Bronze |
| | Pat Dew | Silver | | | 2001 | Donna Adams | Bronze | | |
| | Margaret Shaw | Silver | | | | Ann Smith | Bronze | | |
| | Pauline Bowry | Silver | | | | Lisa John | Bronze | Gold | Gold |
| 1977 | Pauline Bowry | | | Silver | | Zara Glover | Bronze | Gold | |
| 1978 | Beverly Tuck | | | Gold | | Kirsten Penny | Bronze | Gold | Gold x 2 |
| 1979 | Beryl Osborne | | | Gold | | Lisa Gardner | Bronze | | Gold x 2 |
| 1980 | Jackie Harvey | | | Silver | 2002 | Lisa John | Bronze | | Bronze |
| | Margaret Shaw | Bronze | | | | Jo Harries | Bronze | | |
| | Pauline Smith | Bronze | | | | Donna Adams | Bronze | | |
| | Goldie Castle | Bronze | | | | Zara Glover | Bronze | | |
| | Mary Saban | Bronze | | | | Ann Smith | Bronze | | |
| | Gill Holt | Bronze | | | | Nikki Harvey | Bronze | | Silver |
| | Pat Dew | Bronze | | | 2003 | Zara Glover | | Silver | Gold |
| 1981 | Pauline Smith | | | Gold | | Kirsten Penny | | Silver | Gold |
| 1982 | Shelagh Leonard | | | Gold | | Lisa John | | Silver | |
| | Pauline Smith | | | Bronze | | Mary Williams | | | Gold |
| 1983 | Judy Robins | | | Bronze | 2004 | Mary Williams | | | Silver |
| | Jane Virot | | | Bronze | | Zara Glover | Gold | | |
| 1984 | Margaret Shaw | Silver | | | | Jo Harries | Gold | | |
| | Shelagh Leonard | Silver | | | | Lisa Gardner | Gold | | |
| | Judy Robins | Silver | | | | Fiona Banks | Gold | | |
| | Georgina Wardle | Silver | | | | Donna Adams | Gold | | |
| | Jane Virot | Silver | | | | Pauline Buck | Gold | | |
| | Susan Megson | Silver | | | 2005 | Angie Brown | | | Gold |
| 1985 | Judy Robins | Silver | | Bronze | | Fiona Banks | | | Silver |
| | Georgina Wardle | Silver | | | | Zara Glover | | | Silver |
| | Shelagh Leonard | Silver | | Bronze | 2006 | Nicole Prout | | | Bronze |
| | Susan Megson | Silver | | Bronze | | Jemma Smith | | Gold | |
| | Margaret Shaw | Silver | | Gold/Silver | | Katie Jowsey | | Gold | Bronze |
| | Gillian Wandless | Silver | | | | Fiona Banks | | Gold | Bronze |
| 1988 | Shelagh Leonard | | | Bronze | | Lisa John | | | Gold |
| 1991 | Pauline Smith | | | Silver | 2007 | Fiona Banks | Bronze | | Silver |
| 1993 | Judy Howlett | Gold | | | | Kirsten Penny | Bronze | | |
| | Shelagh Leonard | Gold | | | | Zara Glover | Bronze | | |
| | Tina Darvill | Gold | | Gold | | Jemma Smith | Bronze | | |
| | Kimberley Coote | Gold | | | | Lisa John | Bronze | | |
| | Pauline Smith | Gold | | Gold | | Katie Jowsey | Bronze | | |
| | Emma Barlow | Gold | | Gold/Silver | 2008 | Zara Glover | | | Gold/Bronze |
| 1994 | Pauline Smith | Bronze | | Silver | | Kirsten Penny | | | Gold |
| | Carol Callow | Bronze | | | 2009 | Zara Giles | | | Silver x 2 |
| | Shelagh Leonard | Bronze | | | 2010 | Nikki Ainge | Bronze | Gold | |
| | Georgina Wardle | Bronze | | | | Hayley White | Bronze | Gold | Bronze |
| | Judy Howlett | Bronze | | | | Lisa John | Bronze | Gold | Bronze |
| | Kimberley Oakley | Bronze | | | | Laura Ivory | Bronze | | |
| 1995 | Pauline Buck | | | Bronze | | Jemma Smith | Bronze | | |
| | Gemma Burden | | | Gold | | Faye Elkington | Bronze | | |
| 1997 | Jo Harries | Bronze | Silver | Bronze x 2 | | Kirsten Penny | | | Bronze |
| | Gemma Burden | Bronze | Silver | | | Fiona Banks | | | Bronze |
| | Nikky Harvey | Bronze | | | | | | | |

INTERNATIONAL MEDAL WINNERS

YAC

| | TEAM | TRIOS | DOUBLES | INDIVIDUAL | | TEAM | TRIOS | DOUBLES | INDIVIDUAL |
|------|-------------------|--------|---------|-------------|------|-----------------|-------|---------|------------|
| 1992 | Emma Barlow | | | Gold/Bronze | 1996 | Paul Evans | | | Silver |
| 1998 | Lisa John | | | Gold | | Paul Delaney | | | Silver |
| | Zara Glover | | Bronze | | 1998 | Steven Reid | | | Bronze |
| 2002 | Lisa John | | Gold | | 2008 | Matt Hann | | Silver | |
| | Zara Glover | | Gold | | | Dominic Barrett | | Silver | Gold x 2 |
| 2002 | Donna Adams | Gold | Gold | Bronze | | Dominic Barrett | | | Bronze |
| | Ann Smith | Gold | Gold | | 2010 | Adam Cairns | | | Gold |
| | Zara Glover | Gold | | | | | | | |
| | Lisa John | Gold | | | | | | | |
| 2004 | Laura Ivory | Bronze | | | | | | | |
| | Holly Towersey | Bronze | | | | | | | |
| | Jo Allsebrook | Bronze | | | | | | | |
| | Jemma Smith | Bronze | | | | | | | |
| 2010 | Sarah Overall | Bronze | | | | | | | |
| | Rachel Cox | Bronze | | | | | | | |
| | Danielle Hopcroft | Bronze | | | | | | | |
| | Hayley White | Bronze | | Silver | | | | | |



INTERNATIONAL MEDAL WINNERS

Juniors

| | TEAM | TRIOS | DOUBLES | INDIVIDUAL | | TEAM | TRIOS | DOUBLES | INDIVIDUAL |
|------|-------------------|--------|---------|------------|------|-------------------|--------|---------|------------|
| 1978 | J Quinan | | Bronze | | 1972 | D Field | Gold | | |
| | K Redwood | | Bronze | | | Paul Scottow | Gold | | |
| 1990 | Alison Freeman | | | Silver | | Nigel Thompson | Gold | | |
| 1992 | Jo Harries | Silver | Gold | | 1974 | Chas McCarthy | | | Gold |
| | Gemma Burden | Silver | | | | Kim Dixon | Gold | | |
| | Melanie Isaacs | Silver | | | | Mark Wells | Gold | | |
| | Sally Warburton | Silver | Gold | | | Kim Johnson | Gold | | |
| | Susan Cambell | Silver | Gold | | | Syd Symonds | Gold | | |
| | Fiona Hutchison | Silver | | | | Pelar Chouham | Gold | | |
| 1994 | Jo Harries | Gold | | Gold | 1982 | Simon D Brown | Bronze | | |
| | Nikki Harvey | Gold | Bronze | | | Simon M Brown | Bronze | | |
| | Claire Warburton | Gold | Bronze | Bronze | | John Chambers | Bronze | | |
| | Melanie Isaacs | Gold | | Bronze | | Gerald Gibbons | Bronze | | |
| | Gemma Burden | Gold | | Gold | | Keith Jeffrey | Bronze | | |
| | Zoe Mansfield | Gold | Bronze | | | Mark Presley | Bronze | | |
| 1995 | Gemma Burden | Silver | | | 1988 | Colin Toogood | Silver | | Bronze |
| | Melanie Isaacs | Silver | | | | Alan Toogood | Silver | | Bronze |
| | Emily Johnson | Silver | | | | W Beedle | Silver | | |
| | Zoe Mansfield | Silver | | | | D Matthews | Silver | | |
| | Alison New | Silver | | | | M Scott | Silver | | |
| | Kirsten Penny | Silver | | | | Jai Buller | Silver | | |
| 1996 | Lisa Ayers | Silver | Gold | | 1990 | Jai Buller | | Bronze | Bronze |
| | Ann Smith | Silver | Silver | | | Mark Johnson | | Bronze | Bronze |
| | Rebecca Churcher | Silver | Silver | | | Alan Toogood | | Bronze | |
| | Emily Johnson | Silver | Gold | Bronze | 1994 | Harry Langham | Silver | | |
| | Gemma Burden | Silver | Gold | Bronze | | Mark Hutton | Silver | | |
| | Lois Bonfield | Silver | Silver | | | Michael Hearn | Silver | | |
| 1998 | Ann Smith | Silver | | Bronze | | Paul Carter | Silver | | Silver |
| | Rachel Aldersley | Silver | | | | Paul Delaney | Silver | | Silver |
| | Rebecca Churcher | Silver | | | | David Tovey | Silver | | Bronze |
| | Zara Glover | Silver | | | 1995 | Dan Battison | Bronze | | |
| | Lisa John | Silver | | Bronze | | Julian Cawthorn | Bronze | | |
| | Emma Peden | Silver | | | | Craig Ellis | Bronze | | |
| 1999 | Donna Adams | Gold | | | | Harry Langham | Bronze | | |
| | Joanne Clarke | Gold | | | | Paul Malton | Bronze | | |
| | Zara Glover | Gold | | | | Neil Miller | Bronze | | |
| | Lisa John | Gold | | | 1996 | Chris Johnson | Gold | | Gold |
| | Ann Smith | Gold | | | | James Schaffer | Gold | | |
| | Alison Taylor | Gold | | | | Jon Zadel | Gold | | |
| 2000 | Donna Adams | Gold | | | | Craig Wanden | Gold | | |
| | Fiona Banks | Gold | | | | Andrew Giles | Gold | | Gold |
| | Zara Glover | Gold | | Bronze | | David Cooper | Gold | | |
| | Vicky Hawes | Gold | | | 1997 | Chris Johnson | Silver | | |
| | Jemma Smith | Gold | | | | Joe Miller | Silver | | |
| | Emma Tooze | Gold | | | | Paul Moor | Silver | | |
| 2001 | Fiona Banks | Silver | | | | Andrew Wicks | Silver | | |
| | Vicky Hawes | Silver | | | | Jon Zadel | Silver | | |
| | Laura Ivory | Silver | | | 1998 | Jon Zadel | | | Bronze |
| | Amy Kempton | Silver | | | | Andy Wicks | | | Bronze |
| | Jemma Smith | Silver | | | 2000 | Matt Hamilton | | Silver | Bronze |
| | Emma Tooze | Silver | | | | Matt Giles | | Silver | Bronze |
| 2002 | Fiona Banks | Gold | Gold | | | Leon Devlin | | Silver | |
| | Holly Towersey | Gold | | Silver | | Stephen Letchford | | | Gold |
| | Laura Ivory | Gold | Gold | | 2002 | Ian Allison | | | Gold |
| | Emma Tooze | Gold | | | | Sean Crock | | | Gold |
| | Jemma Smith | Gold | Gold | | 2004 | Gareth Stone | | | Gold |
| | Hayley Beavis | Gold | | Silver | 2005 | David Jones | | Silver | |
| 2003 | Jo Allsebrook | Silver | | | | David Kendall | | Silver | |
| | Stephanie Cairns | Silver | | | | Joe Preddy | | Silver | |
| | Laura Ivory | Silver | | | 2006 | David Jones | | | Bronze |
| | Alison Laurie | Silver | | | 2007 | Matt Miller | | Bronze | |
| | Jemma Smith | Silver | | | | Andrew Jones | | Bronze | |
| | Holly Towersey | Silver | | | | Matt Chamberlain | | Bronze | |
| 2004 | Hayley White | Silver | Silver | | 2009 | Matt Blythe | | | Gold |
| | Kayleigh Hewett | Silver | Silver | | | Steven Miller | | | Gold |
| | Holly Towersey | Silver | Silver | | 2010 | Matthew Fidgett | Bronze | | |
| | Becki Jolly | Silver | Gold | | | Jake Daggett | Bronze | | |
| | Jenny Billingham | Silver | Gold | | | Michael Nock | Bronze | | |
| | Stephanie Cairns | Silver | Gold | | | Matt Blythe | Bronze | | |
| 2005 | Jenny Billingham | Silver | Gold | | | | | | |
| | Faye Elkington | Silver | Bronze | | | | | | |
| | Emily Frost | Silver | Bronze | | | | | | |
| | Becki Jolly | Silver | Gold | | | | | | |
| | Sarah Overall | Silver | Bronze | | | | | | |
| | Hayley White | Silver | Gold | | | | | | |
| 2006 | Hayley White | | | Gold | | | | | |
| | Sarah Overall | | | Gold | | | | | |
| 2007 | Hayley White | | | Gold | | | | | |
| | Sarah Overall | | | Gold | | | | | |
| 2008 | Laura Montgomery | Silver | | | | | | | |
| | Danielle Hopcroft | Silver | | | | | | | |
| | Katrina MacIver | Silver | | | | | | | |
| | Chelsie Johnson | Silver | | | | | | | |
| | Kirsty Belchem | Silver | | | | | | | |
| | Kimberley Hewitt | Silver | | | | | | | |
| 2009 | Danielle Hopcroft | Bronze | | | | | | | |
| | Katrina MacIver | Bronze | | | | | | | |
| | Laura Montgomery | Bronze | | | | | | | |
| | Nikki Beard | Bronze | | | | | | | |
| 2010 | Autum Chamberlain | Silver | | Silver | | | | | |
| | Annelise Vokes | Silver | | Silver | | | | | |
| | Rebeka Hamlet | Silver | | | | | | | |
| | Kirsten MacGregor | Silver | | | | | | | |



Love life
for less

HAPPY 50th BIRTHDAY

TO THE
British Tenpin Bowling Association

Congratulations from everyone
at Tenpin Ltd

Temptin'Tenpin - reminding people how much fun bowling is!

See our Temptin' special offers and find out how you can 'Love life for less' now at www.tenpin.co.uk

www.tenpin.co.uk

StrikeRite Pro Shop

For all of your Bowling services

*To all the competitors and officials of the
50th National Championships
We wish you all a striking
successful event*

**Leisure Centre, Farnborough, Hants.
01252 554047 or 07799411598**

On behalf of all UK proprietors

**The Tenpin Bowling
Proprietors Association of Great Britain**

Congratulates the BTBA on its 50th Anniversary
and wishes good luck to all competitors in the
2011 National Championships





The London Pro Shop

NEW WEBSITE COMING SOON !!!

01/03/11

www.thelondonproshop.com

matt5710@hotmail.com

+44 208 897 8887

+44 7716 414857

"Congratulations to the BTBA for 50 years of service to the sport we love!!!"
"Thank you to all my loyal customers for your continued support and may the big numbers keep on coming!!!"

Matt Miller

Scholar USA

USA Sports Scholarship Consultants

www.scholar-usa.com

info@scholar-usa.com

+44 207 119 4120

+44 7809 221 633

ScholarUSA is a professional sports scholarship consultancy, providing expert assistance and on-going support services to sportspersons (such as bowlers) aiming to pursue their dreams of academic sports scholarships in the United States.



*DHL
together with the*

*National Association
of Youth Bowling Clubs*

congratulate the

British Tenpin Bowling Association

on reaching its

50th Birthday

and

wish the Association continued success





Design by

pininfarina

Bowling with Style **SWITCH**[®]
ENTERTAINMENT S.A.

When Italy's most renowned racing car designer meets the latest technology in bowling, it's a whole new ball game. With a complete range of exciting new equipment and facilities, Switch brings more entertainment, quality and performance to bowling. Switch for success.

www.switchbowling.com

Distributed by: Switch Bowling UK Ltd.
Tel. +44 (1455) 851777
terryfawdington@switchbowling.co.uk

great food & family fun

The City Pavilion (formerly City Limits) in Romford is now under new ownership and is has been refurbished to a state-of-the-art entertainment venue.

The City Pavilion is situated in East London close to the city with direct routes to Central London, The North Circular (406), M11, M25 and A12.



Enigma Restaurant & Bar

Looking for a friendly place to eat great food at very low prices?

The newly opened Enigma Bar and Restaurant, offers the perfect place to bring the family for a varied menu and some delicious, traditional deserts.



Millenium Suite

State of the art banqueting suite. Seeing is believing. Excellence oozes from the millennium suite with state of the art sound and lighting, digital video recording technology and banqueting up to 1,200 people or 2,000 guests in an informal format.

The millennium suite is available for weddings, events, concerts, balls and exhibitions. Please call to view by appointment only.

BEER
GARDEN
OPENING
SOON



Panna's Asian cuisine

Our celebrity highly sort after chef has gained cooking accolades in some very prestigious establishments around the world, he has cooked for Her Majesty The Queen and, former president Bill Clinton, to name but a few. Allow yourself the pleasure of sampling the finest Indian cuisine in a superb, comfortable atmosphere pre prepared by one of the world top chefs.your worth it!



Manhattan

Conferencing, motivational events, team building or any other business function, The Manhattan Suite offers the ideal venue. With WiFi, in house sound system, projectors, and catering, we offer facilities from 50 to 300 delegates and free parking for up to 600 cars.



Bowling

Family fun every night of the week with our resident DJ spicing it up at the weekend. We provide glow bowling, school holiday deals and the delicious dinner serving healthy options and slushes for the kids, and of course a fully licensed bar.



The City Pavilion

Call **0208 924 4000**

to book or for further information

www.thecitypavilion.co.uk